



tractive

GPS PET TRACKING

EN / DE / FR / ES / IT / NL



USER MANUAL

Bedienungsanleitung * Mode d'emploi * Manual de Usuario
Manuale dell'Utente * Gebruiksaanwijzing

ENGLISH

User Manual 

ENGLISH

User Manual

1 Charge



2 Activate

www.tractive.com/activate



3 Download Tractive app



4 Attach tracker to the collar of the pet



PACKAGE CONTENTS

1 Tractive GPS Device

(Item no. TRATR1, type: PR00100)

1 USB Charging Cable with Clamp

1 A/C Adapter with USB Outlet

(100-240V, 1A)

2 Collar Clips (A/B)

Charging cable and A/C adapter are located under the packaging of the Tractive GPS device.

ELECTROMAGNETIC COMPATIBILITY

Very strong magnetic fields (e.g. transformers) should always be avoided as this may result in variations in the transmission. Failure to follow these instructions may lead to malfunctions or damage to your Tractive GPS device.

RISKS FOR CHILDREN AND PEOPLE IN NEED OF CARE

The use of this device is not intended for people (including children) with limited physical, sensory or mental abilities or lack of experience and/or lack of knowledge, unless they are supervised by a person responsible for their safety or have been instructed on the use of the device.

NOTE: Some countries, states or regions have laws related to location based tracking of people, animals and objects. It's the sole responsibility of the owner and user to abide by the law and rules in the area the Tractive GPS device is used.

SAFETY ADVICE

Important: Although the Tractive GPS device is small in size, it might be too large or heavy for small or injured pets.

If you are unsure whether you can use this device with your pet, we highly recommend consulting a pet doctor or veterinarian.

BATTERY OPERATION

Your transmitter is operated by a rechargeable lithium polymer battery. Below you will find some advice on the use of rechargeable batteries:

- The battery of the Tractive GPS device cannot be replaced and must not be removed.
- Batteries may not be disassembled, thrown into fire or short-circuited.
- Never expose the Tractive GPS device to excessive heat such as sunshine, fire or the like! This increases the danger of battery leakage.
- Only use the A/C adapter and USB cable that came with your Tractive GPS device. The use of other cables and/or A/C adapters might overcharge the battery and can lead to fire or explosion.

Disregarding these instructions can cause damage and possibly even cause the battery to explode.

DISPOSAL

Batteries are hazardous waste. For the correct disposal of batteries, appropriate containers are provided at the premises of commercial battery dealers as well as local council waste disposal facilities. If you want to dispose of your Tractive GPS device, follow the current local provisions at the time. Information may be obtained from the local council waste disposal facility.

Tractive GmbH
Pluskaufstraße 7
Business Center, 5. Stock
4061 Pasching
Austria



FUNCTIONS AND USE

In order to locate your pet or farm animal with Tractive, a PC with internet connection or a smartphone (Android, iPhone) is required. The Tractive smartphone apps can be downloaded from the Google Play Store for Android or the Apple AppStore for iPhone.

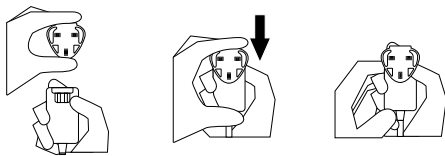
A list with Tractive compatible smartphones can be found at www.tractive.com/compatibility

The Tractive GPS device can only be used after successful activation through a web browser.

GETTING STARTED

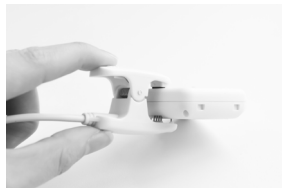
1. CHARGING THE DEVICE

We recommend to fully charge the Tractive GPS device before its first use. Attach the A/C adapter head to the A/C adapter as depicted below.



Connect the USB cable to the A/C adapter that came with the Tractive device. Then attach the charging clamp on the device as shown in the image below.

The LED on the Tractive GPS device will turn red while the device is charging. Once the device is fully charged, the red light will disappear.



2. DEVICE ACTIVATION

Activation of the Tractive GPS device requires the device to be turned on. Keep the power button on the device pressed for around 3 seconds. Once you hear two short ascending beeps and see a green light, the device has successfully been turned on. Holding the button again for 3 seconds will turn off the device.

Enter the link below into the address bar of your browser to access the Tractive homepage, which will guide you through the step by step activation of your Tractive GPS device:

www.tractive.com/activate

3. TRACTIVE APP SETTINGS

In order to enable you to locate a pet, open the Tractive App on your smartphone and add a pet. The Tractive app will guide you through the first steps of adding a pet and assigning a new Tractive GPS device to the pet. After the Tractive GPS device has been assigned to the pet, the device is ready for use.

NOTE: After turning on the Tractive GPS device for the first time or after a period of inactivity, it can take a few minutes until the device is ready to use. To speed up this process, turn on the device and make sure it's placed under the open sky away from buildings, trees and electrical towers.

4. ATTACHING THE TRACTIVE GPS DEVICE TO A PET COLLAR

You can now clip the device on the collar of your pet using the collar clips that came with your Tractive GPS device.

For collars with a thickness of up to 3 mm, use the smaller collar clip with the letter B on the back. For collars with a thickness between 3 and 5 mm, use the larger collar clip with the letter A on the back. It is recommended to position the device on the collar in a way, that it faces the sky.



If the Tractive GPS device is loose on your pet's collar or does not fit for some other reason, we recommend the usage of an original Tractive collar, available in different sizes from your Tractive retail partner and at shop.tractive.com

5. LOCATING A PET AND LIVE TRACKING

After setting up the Tractive GPS device and adding a pet in the Tractive App or on www.tractive.com, you can start to locate your pet. The Tractive App will guide you through locating your pet step by step.

LED WARNINGS

The LED located on the top of the Tractive GPS device indicates the current status of the device.

- **Battery**  (red LED flashes 3 times every 15 seconds)









The battery level of the Tractive device is low. Fully recharge the device to get the best tracking results.

- **LIVE-Tracking** (White LED flashes)

During a LIVE-tracking activity the LED flashes in white. This allows you to locate your pet easier at night time.

DEVICE STATUS

By pressing the on/off button once, the GSM and GPS status of the device will be shown using two consecutive flashes.

-   network available - GPS available
-   no network - GPS available
-   network available - no GPS
-   no network - no GPS

In case of an error, please bring the device into an area with Tractive coverage. In order to get GPS reception, ensure that the device is fully charged and located outside of buildings and under clear sky. It might take a few minutes for the device to get a GPS connection after it has been turned on. For more information visit www.tractive.com/faq

DECLARATION OF CONFORMITY

EMC Directive 1999/5/EC:

Short text of the Declaration of conformity: Tractive GmbH hereby declares that the Tractive GPS device (item no. TRATR1, type: PR00100) conforms to the fundamental requirements and other relevant provisions of directive 1999/5/EC.

The full text of the declaration of conformity can be viewed on our website: www.tractive.com

FCC COMPLIANCE STATEMENT

This device complies with part 15 of the FCC Rules. Operation is subject to the following two conditions:

1. This device may not cause harmful interference, and
2. This device must accept any interference received, including interference that may cause undesired operation.

WARNING: Changes or modifications to this unit not expressly approved by the party responsible for compliance could void the user's authority to operate this equipment.

NOTE: This equipment has been tested and found to comply with the limits for a Class B digital

device, pursuant to Part 15 of the FCC Rules. These limits are designed to provide reasonable protection against harmful interference in a residential installation. This equipment generates, uses and can radiate radio frequency energy and, if not installed and used in accordance with the instructions, may cause harmful interference to radio communications.

However, there is no guarantee that interference will not occur in a particular installation. If this equipment does cause harmful interference to radio or television reception, which can be determined by turning the equipment off and on, the user is encouraged to try to correct the interference by one or more of the following measures:

- Reorient or relocate the receiving antenna.
- Increase the separation between the equipment and the receiver.
- Consult the dealer or an experienced radio/TV technician for help.

FCC RADIATION EXPOSURE STATEMENT

This requirement complies with FCC radiation exposure limits set forth for an uncontrolled environment. This equipment should be installed and operated with minimum distance 20cm between the radiator & your body. This transmitter must not be co-located or operating in conjunction with any other antenna or transmitter.

RSS (CATEGORY I EQUIPMENT)

This device complies with Industry Canada licence-exempt RSS standard(s). Operation is subject to the following two conditions:

1. this device may not cause interference, and
2. this device must accept any interference, including interference that may cause undesired operation of the device.

Le présent appareil est conforme aux CNR d'Industrie Canada applicables aux appareils radio exempts de licence. L'exploitation est autorisée aux deux conditions suivantes :

- (1) l'appareil ne doit pas produire de brouillage, et
 - (2) l'utilisateur de l'appareil doit accepter tout brouillage radioélectrique subi, même si le brouillage est susceptible d'en compromettre le fonctionnement
-

Under Industry Canada regulations, this radio transmitter may only operate using an antenna of a type and maximum (or lesser) gain approved for the transmitter by Industry Canada. To reduce potential radio interference to other users, the antenna type and its gain should be so chosen that the equivalent isotropically radiated power (e.i.r.p.) is not more than that necessary for successful communication.

Conformément à la réglementation d'Industrie Canada, le présent émetteur radio peut fonctionner avec une antenne d'un type et d'un gain maximal (ou inférieur) approuvé pour l'émetteur par Industrie Canada. Dans le but de réduire les risques de brouillage radioélectrique à l'intention des autres utilisateurs, il faut choisir le type d'antenne et son gain de sorte que la puissance isotrope rayonnée équivalente (p.i.r.e.) ne dépasse pas l'intensité nécessaire à l'établissement d'une communication satisfaisante.

WARRANTY

We offer 12 month warranty for this product. The warranty period starts from the date of purchase (receipt with proof of purchase). Within this period we will repair all defects resulting from material failure or malfunctions free of charge, except: batteries, improper handling, dropping, shock or the like.

If you would like to submit a comment, you have the following options:

- a) Please contact your point of sale or
- b) Send us an e-mail: support.shop@tractive.com

PLEASE NOTE THAT DUE TO ORGANIZATIONAL REASONS WE WILL NOT ACCEPT ANY UNANNOUNCED PACKAGES SENT VIA CARRIAGE FORWARD.

CE



tractive

Tractive Manual Version 1.2/B

